

[TABLE OF CONTENTS](#)[ARTICLE I Platteville Plan](#)[ARTICLE II Dacono, Firestone and Frederick Plan](#)[ARTICLE III Dacono, Firestone, Frederick Standards](#)

ARTICLE IV Reserved

[ARTICLE V Keenesburg Plan](#)

ARTICLE VI Reserved

[ARTICLE VII Eaton Plan](#)

ARTICLE VIII Reserved

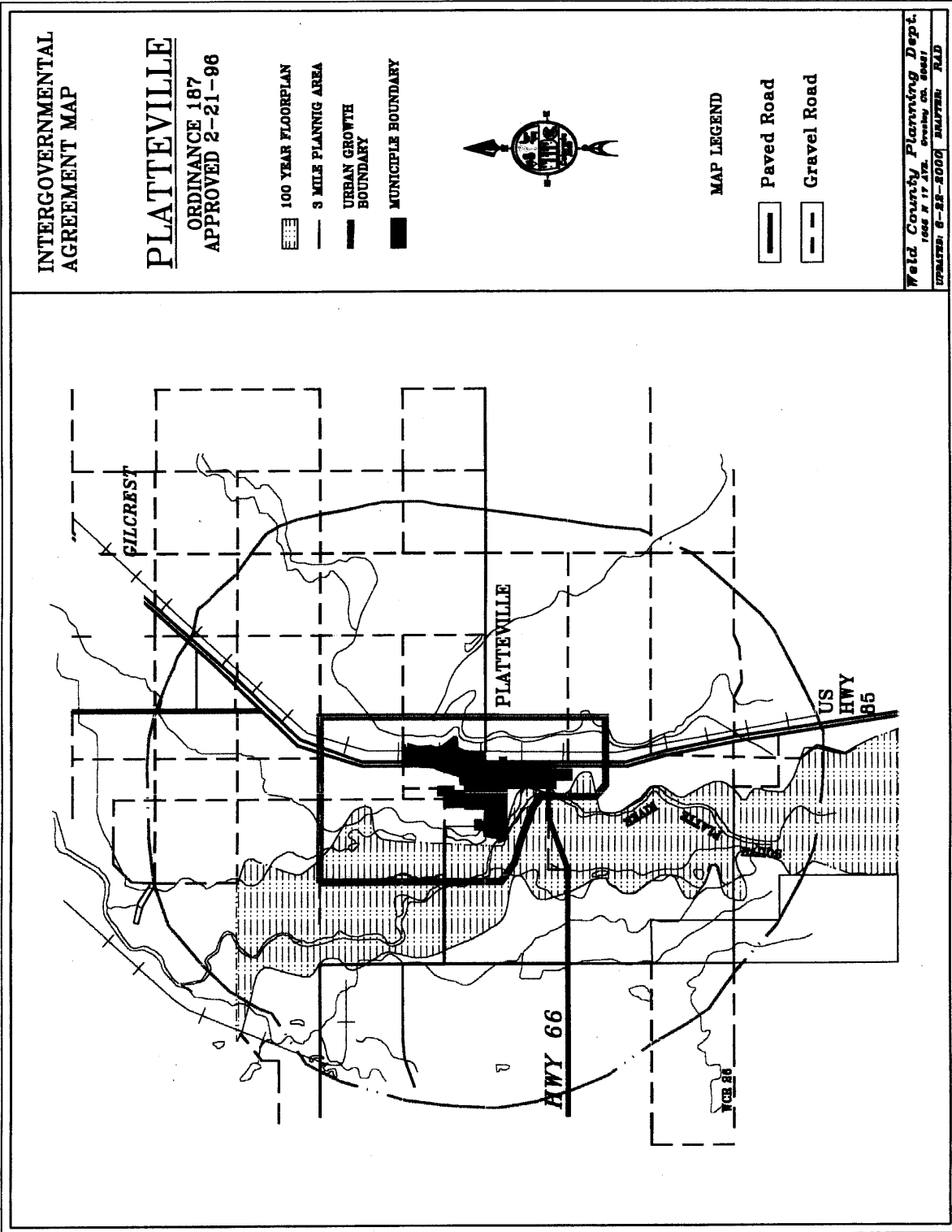
[ARTICLE IX Kersey Plan](#)

ARTICLE X Reserved

[ARTICLE XI LaSalle Plan](#)[ARTICLE XII Fort Lupton Plan](#)[ARTICLE XIII Ault Plan](#)[ARTICLE XIV Longmont Plan](#)[ARTICLE XV Hudson Plan](#)[ARTICLE XVI Gilcrest Plan](#)[APPENDIX](#)

APPENDIX 19-A

URBAN GROWTH AREA MAP FOR PLATTEVILLE



APPENDIX 19-B

PLATTEVILLE USE RESTRICTIONS UPON ANNEXATION

31.4.18 Any use permitted as a Use by Right, an ACCESSORY USE, or a Use by Special Review in the COMMERCIAL or Industrial zone districts, provided that the property is not a LOT in an approved or recorded subdivision plat or LOTS part of a map or plan filed prior to adoption of any regulations controlling subdivisions. PUD development proposals shall not be permitted to use the special review permit process to develop.

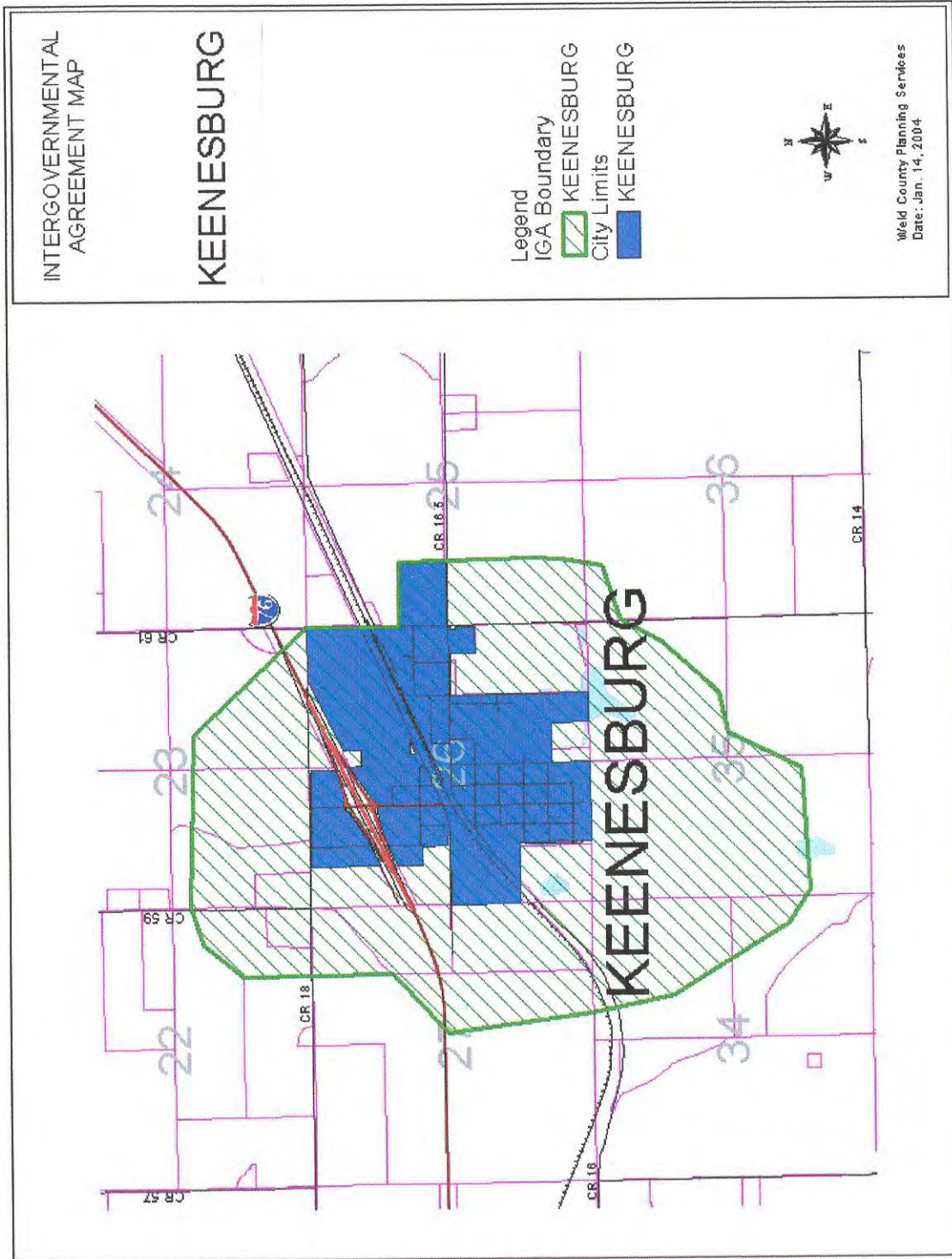
APPENDIX 19-D

DACONO-FIRESTONE-FREDERICK USE RESTRICTIONS UPON ANNEXATION

31.4.18 Any use permitted as a Use by Right, an ACCESSORY USE, or a Use by Special Review in the COMMERCIAL or Industrial zone districts, provided that the property is not a LOT in an approved or recorded subdivision plat or LOTS part of a map or plan filed prior to adoption of any regulations controlling subdivisions. PUD development proposals shall not be permitted to use the special review permit process to develop.

APPENDIX 19-E

URBAN GROWN AREA MAP FOR KEENESBURG



(Weld County Code Ordinance 2003-9)

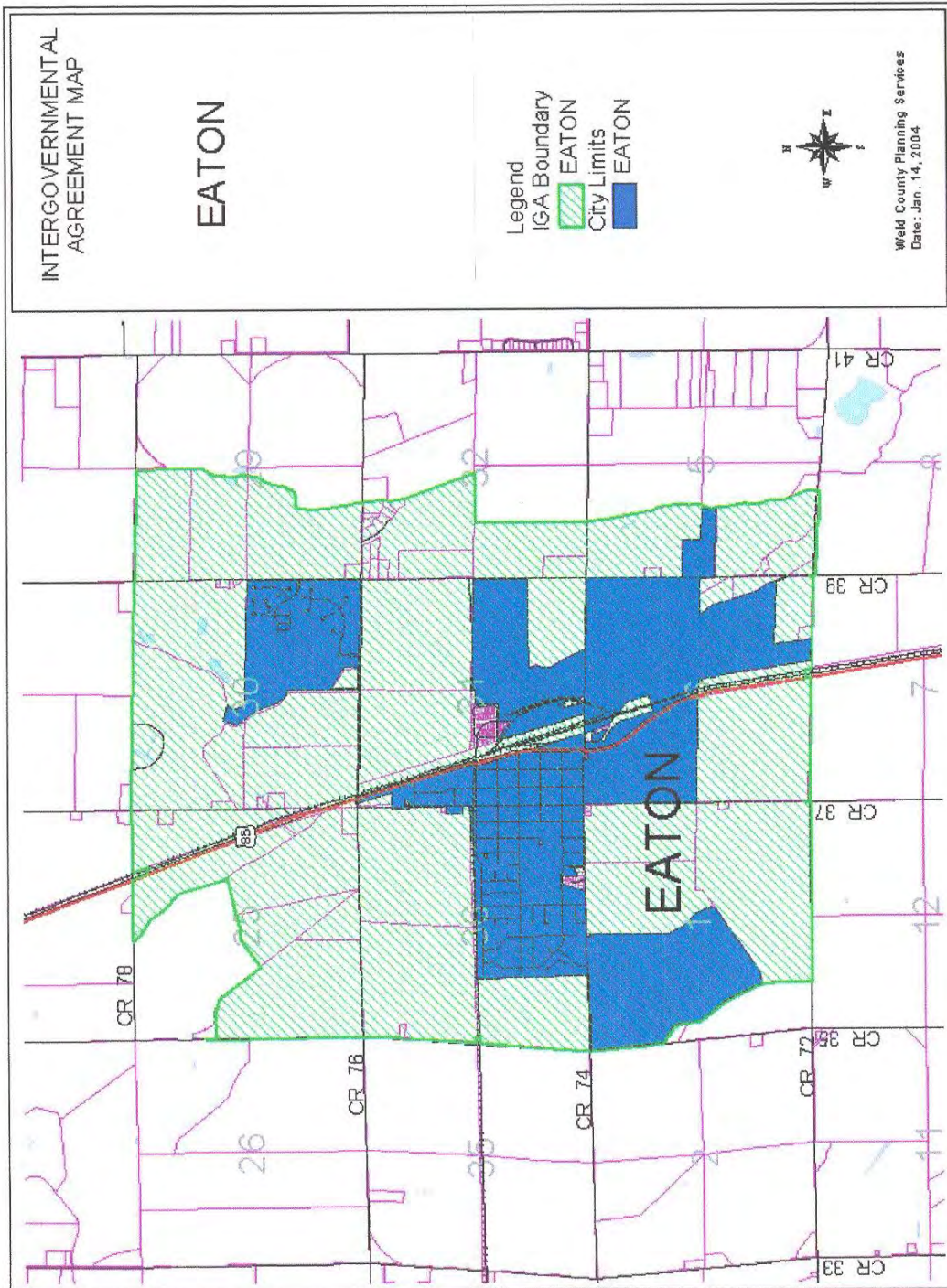
APPENDIX 19-F

RESERVED

(Deleted by Weld County Code Ordinance 2005-01)

APPENDIX 19-G

URBAN GROWTH AREA MAP FOR EATON



(Weld County Code Ordinance 2003-9)

APPENDIX 19-H

RESERVED

(Deleted by Weld County Code Ordinance 2005-01)

APPENDIX 19-I

URBAN GROWTH AREA MAP FOR KERSEY



(Weld County Code Ordinance 2003-9)

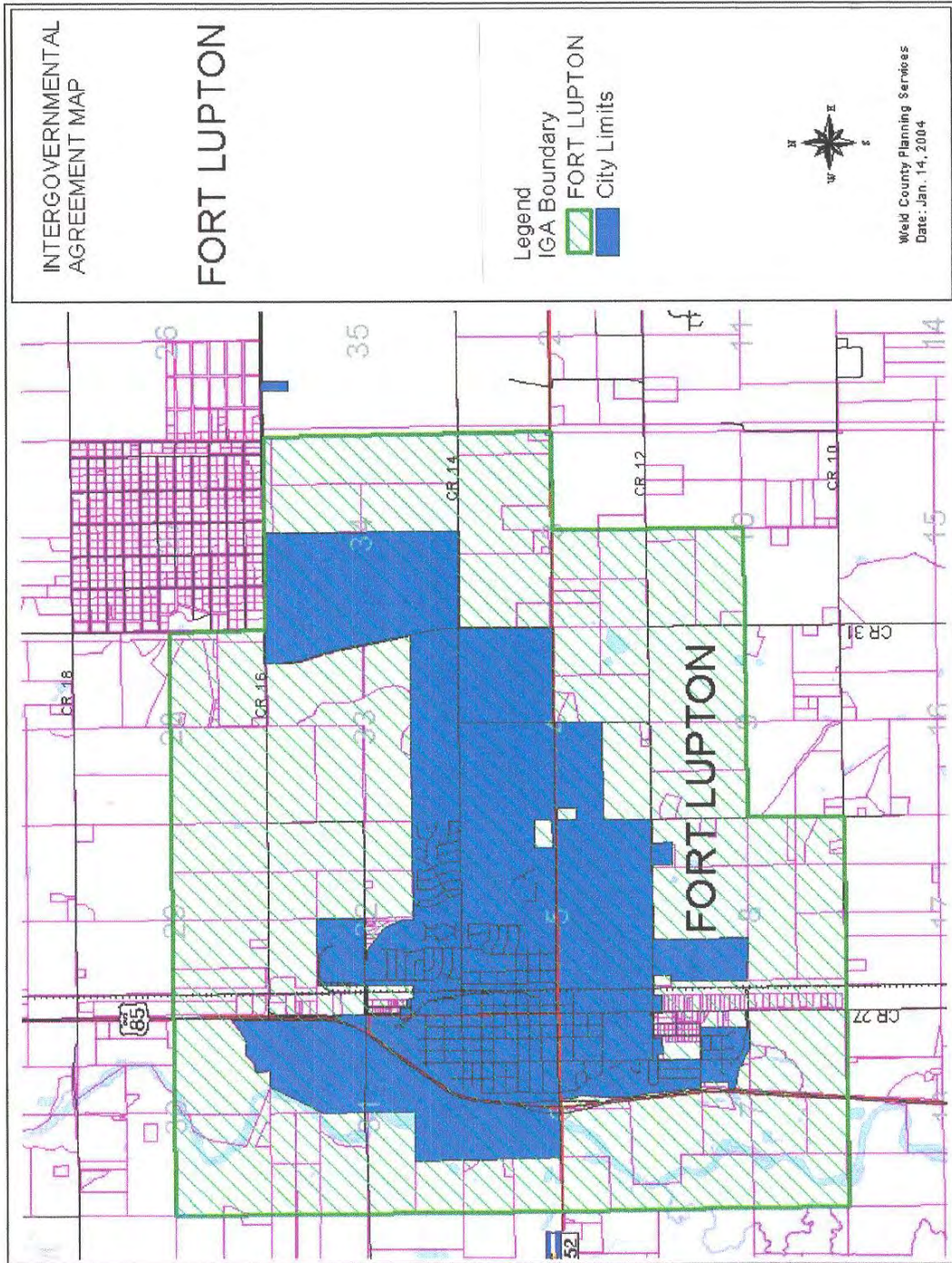
APPENDIX 19-J

RESERVED

(Deleted by Weld County Code Ordinance 2005-01)

APPENDIX 19-L

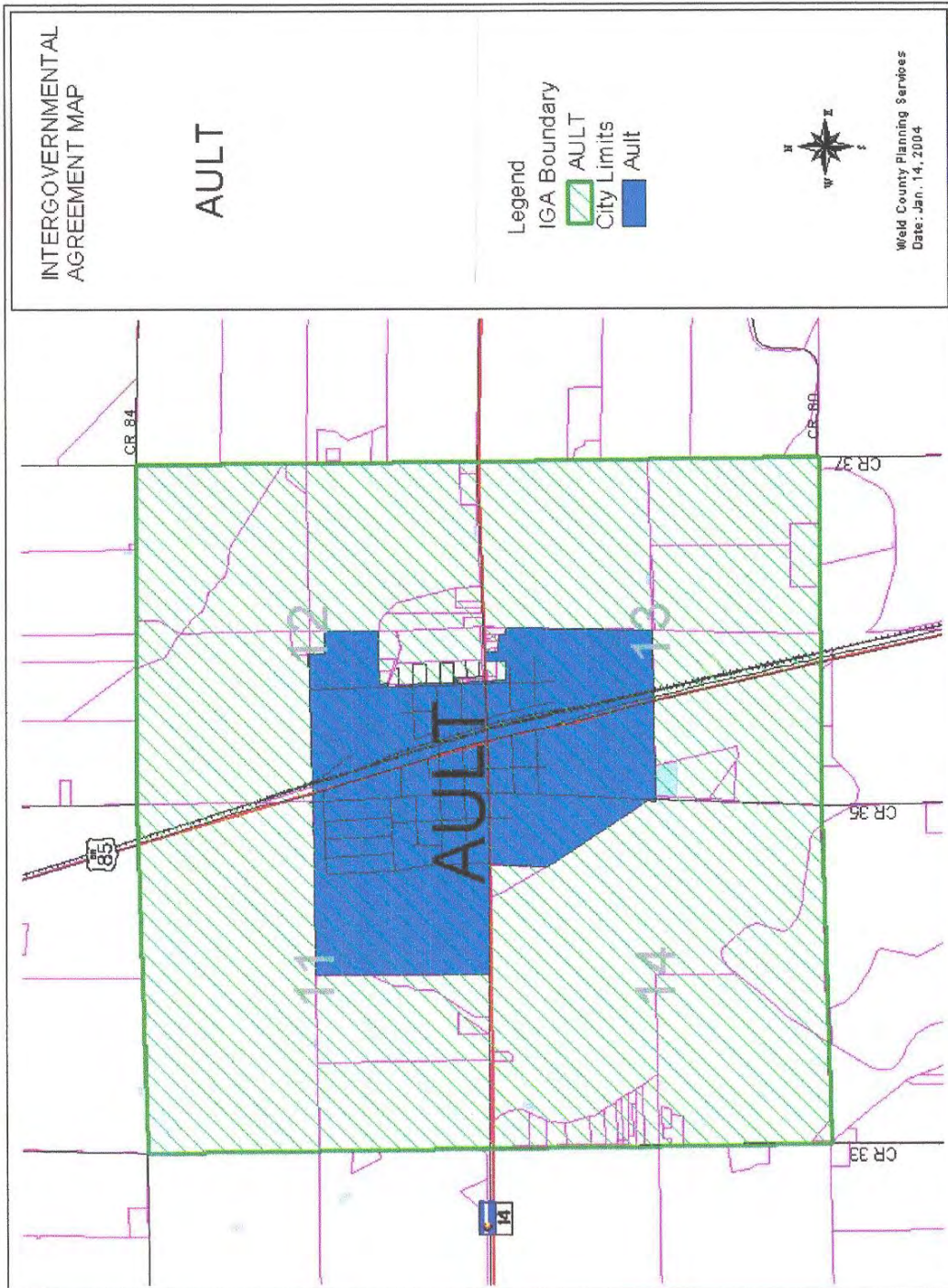
URBAN GROWTH AREA MAP FOR FORT LUPTON



(Weld County Code Ordinance 2003-9)

APPENDIX 19-M

URBAN GROWTH AREA MAP FOR AULT

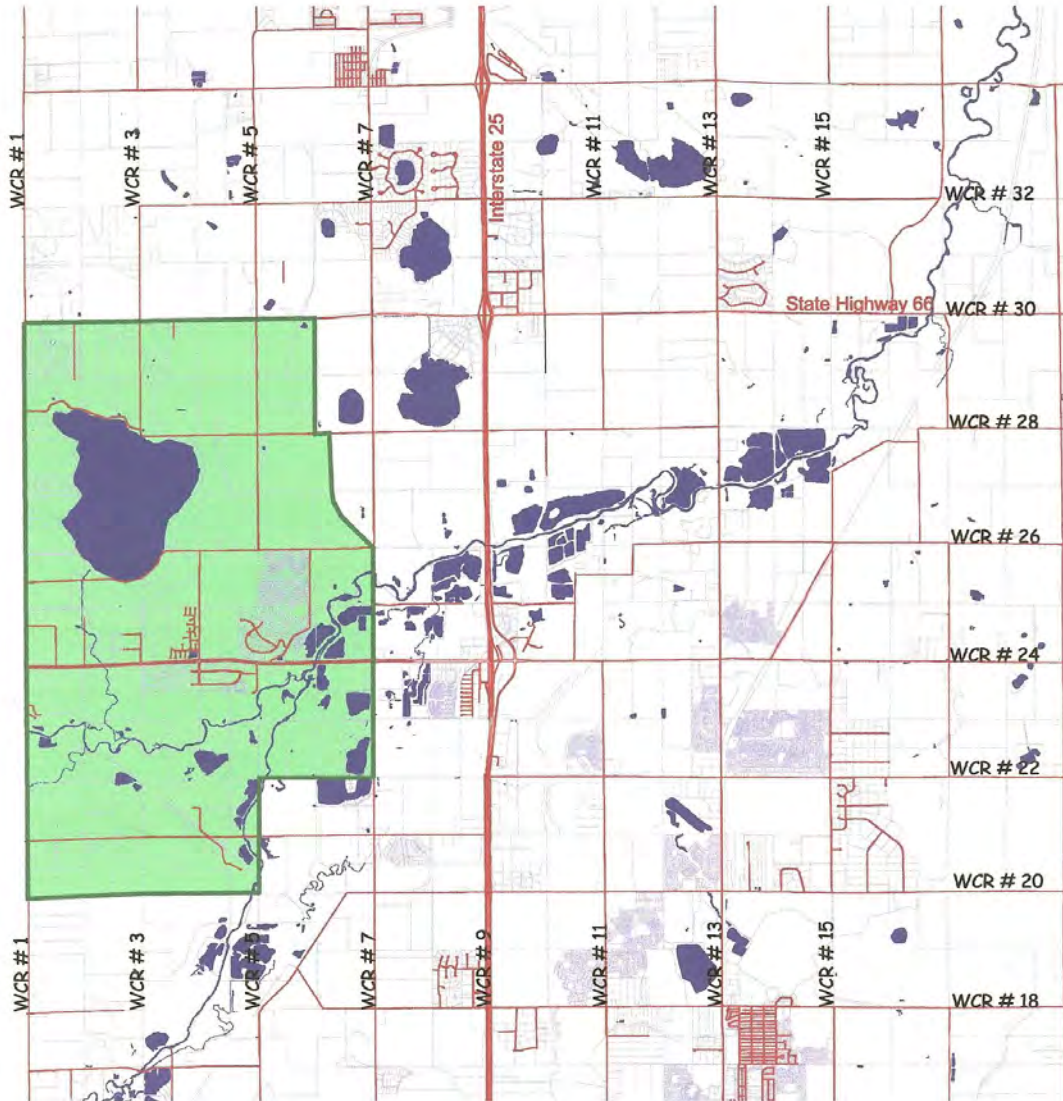


(Weld County Code Ordinance 2002-2; Weld County Code Ordinance 2003-9)




APPENDIX 19-N

URBAN GROWTH AREA MAP FOR LONGMONT

Longmont IGA Boundary



Key to Symbols

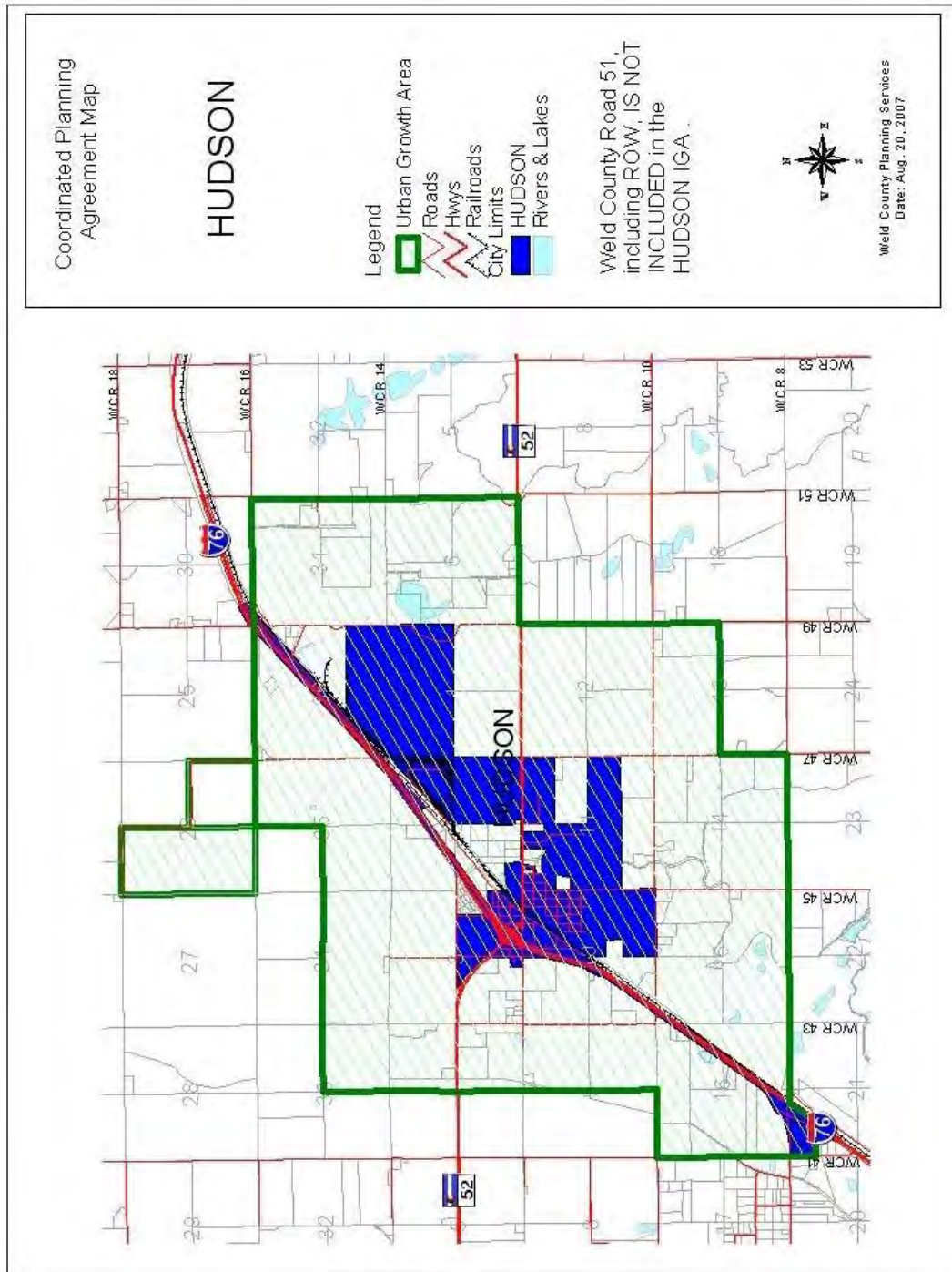
-  Weld County Roads
-  Parcels
-  Longmont Urban Growth Area



(Weld County Code Ordinance 2002-7)

APPENDIX 19-O

URBAN GROWTH AREA MAP FOR HUDSON

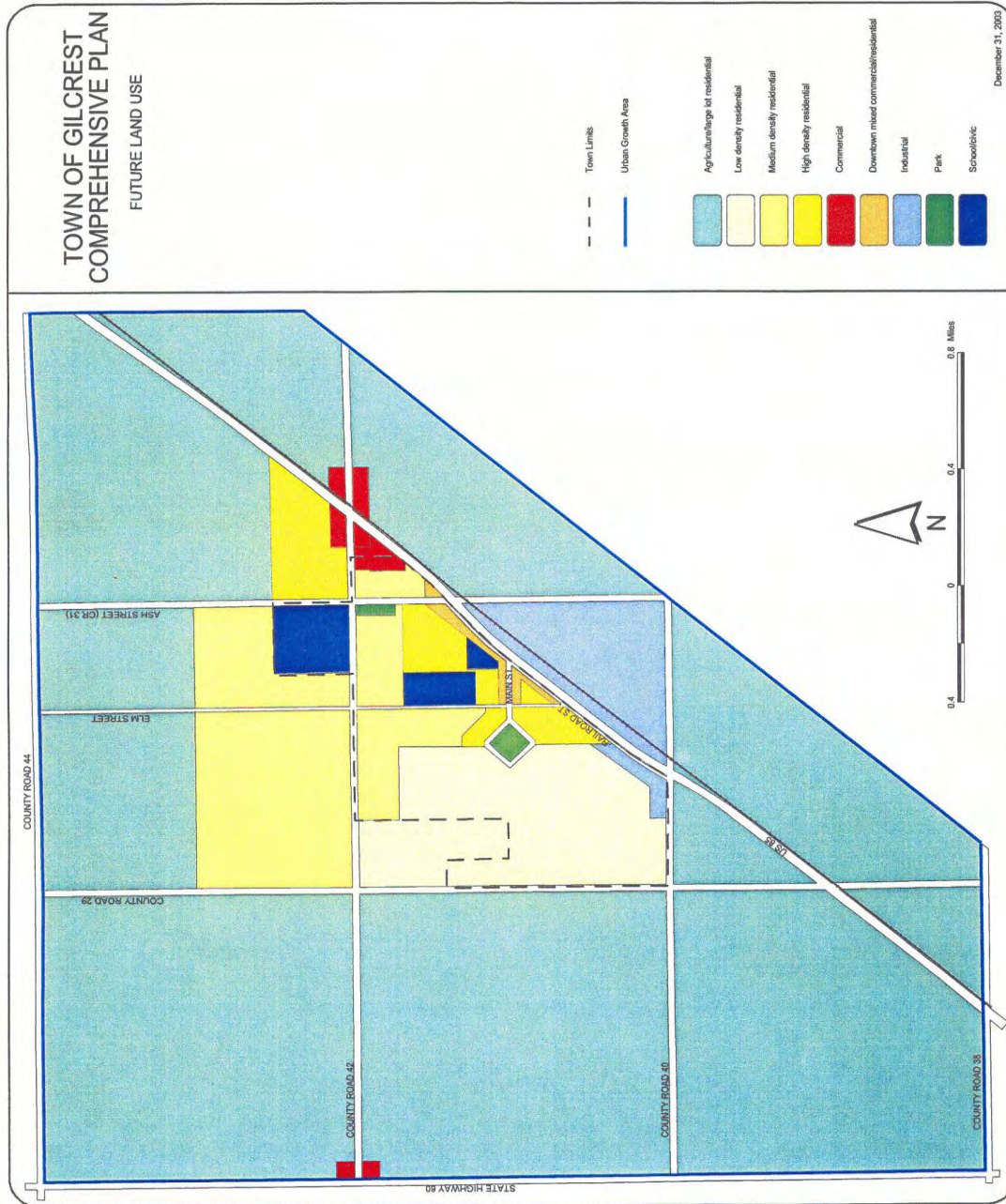


(Weld County Code Ordinance 2004-8; Weld County Code Ordinance 2007-3)

APPENDIX 19-P

TOWN OF GILCREST COMPREHENSIVE PLAN

1-6



(Weld County Code Ordinance 2005-2)